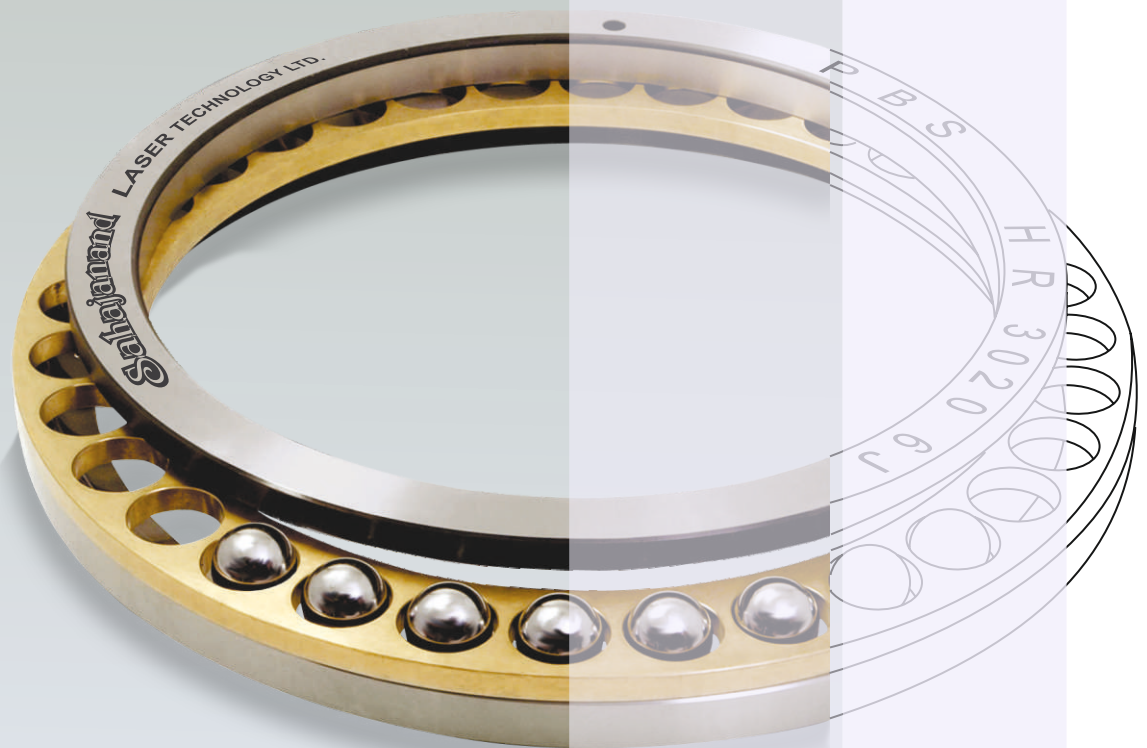


Innovative Laser Marking System



AKSHAR FIBER PRO-ULTRA

AKSHAR FIBER PRO-ULTRA



Specification

MACHINE	AKSHAR FIBER-PRO
MODEL	F10 F20 F30 F50
CLASS	Class IV Class I/IV
OUTPUT POWER (W)	10 20 30 50
WAVE LENGTH	1060 - 1070 nm

Optional Accessories Software

Panel A.C.
Fume Suction
Rotary Device
X-Y Axis Manual /
Motorized
Actuator Motorized
Automations
Indexing Table
Conveyor Belt
Pick & Place
CE Compliant

- The software - Mark-Pro for laser marking has been developed completely in-house.
- Advanced platform GUI (Graphical User Interface)
- Serial Number Marking
- Circular Marking
- DXF, PLT, BMP, JPG Compatible
- 1D & 2D Barcode marking
- Support of Automation
- Integrable with ERP System

SUPPLIED MORE THAN 15000 SYSTEMS

Akshar Fiber Pro is the world's largest marking system using most advanced laser pumping technology. With a sharp beam structure, it is best suited for fine and small graphic and character marking applications. These machines are the best combination of speed, accuracy and versatility. Taking into consideration ergonomics of application, the machine is designed aesthetically for optimum utility. With varied applications in the industry, Akshar Fiber Pro holds its own position in terms of affordability, adaptability, comfort in usage, power efficiency, stability and in-house software. Performance of Akshar Fiber Pro makes your factory its next home.

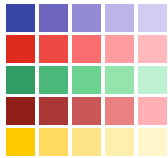
Features

- Extremely sharp beam profile for superficial and deep marking
- Motorized axis for faster focusing
- Ergonomically designed for faster production speed
- Compact size
- High speed engraving and marking
- User friendly software Mark-Pro
- Laser safety window
- Colour Marking

Para Vault

A new generation feature where-in virtual vault is created for storing the best laser marking parameters of previously marked materials. With a single click, machine will fetch the past data and automatically focus & set the laser parameter for marking. This not only saves lot of time in the set-up trials but also maintains consistent quality of the marking.

Para Matrix

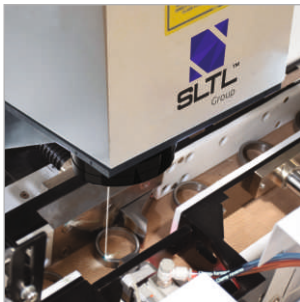


Para matrix helps in determining the best laser marking result on any given material. Here, the operator evaluates the para matrix and selects the best one. Then laser parameters are fetched by the software for that particular option. This feature is helpful for even the ones with very less knowledge about laser marking machine operation.

Application

- Accessories
- Automotive Components
- Clock & Watches
- Jewellery Hallmarking
- Electric Appliances
- Glass Frames
- Logos
- Communication Equipments
- Graphical Patterns
- Medical Instruments
- Machine Tools
- Tubes, Pipes, Irrigation Tubes
- Plastic Buttons
- Precision Equipments
- Integrated Chips

Automation



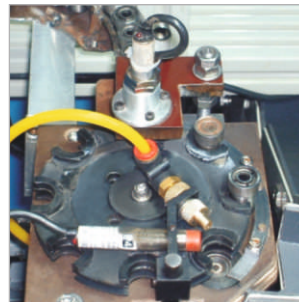
BEARING

- Loading / unloading conveyor
- Positioning and centering device for marking
- Oil slusher unit
- Storage conveyor
- Rotary indexing for periphery
- Marking on top surface
- Cone measurement



PISTON RING

- Single / Dual feeder mechanism
- OD / ID sensing machine
- Automatic OK / NOT OK
- Segregation
- Ring collecting & aligning unit



NOZZLE & AUTO ANCILLARY

- Rotary indexing mechanism
- Vibro feeder for auto loading
- Pick N Place mechanism
- 1D & 2D Barcode marking & reading

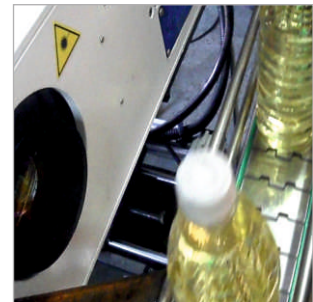


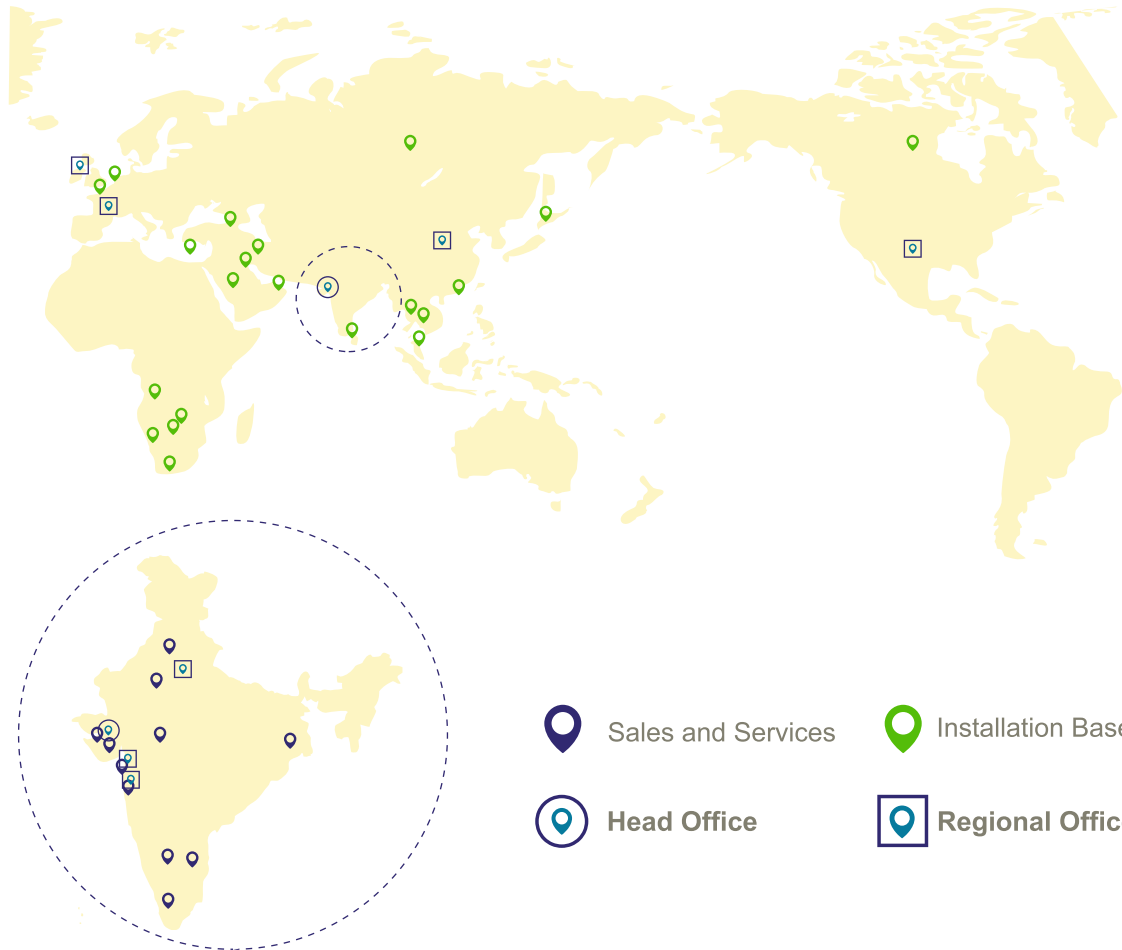
IMAGE SENSING

- Objects/Bearing inspection system
- 3D object mapping / Scanning / Measurement system
- Auto inspection & Segregation System

SLTL PRESENCE

Angola
Armenia
Botswana
Canada
China
Dubai
Germany
Hong Kong
India
Iran
Israel
Namibia
Poland
Russia
Saudi Arabia
Singapore
South Africa
South Korea
Sri Lanka
Switzerland
Thailand
UK
USA
Vietnam

Ahmedabad
Bangalore
Bhavnagar
Chandigarh
Chennai
Coimbatore
Delhi
Gandhinagar
Indore
Jaipur
Kolkata
Mumbai
Pune
Rajkot
Surat



Authorized Channel Partner



G&WMachinery Sales, Inc.

Glenn J. Osborne
President

☎ 513.539.2700
☎ 513.328.5363
✉ glenn@gwmachinery.com
🌐 www.gwmachinery.com

📍 4315 Salzman Rd.
Middletown, OH 45044



An ISO 9001:2015
Certified Company

Sahajanand Laser Technology Ltd. (SLTL Group)

E-30, Electronic Estate, G.I.D.C., Sector - 26,
Gandhinagar - 382 028, Gujarat, India.
Tel : +91-79-2328-7461-63-64 Fax : +91-79-2328-7470
Cell : +91-99-2503-6495
Email : mkt@SLTL.com

www.SLTL.com



SLTL
Group



UK:
SLT Ltd.



USA:
SLT Inc.



Germany:
SLT GmbH.



China:
SLT Guangzhou

SLTB26LMM05U21